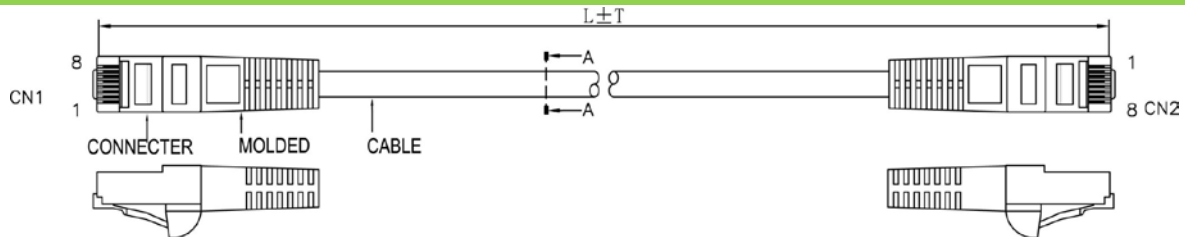


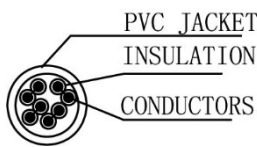
SCP Part Number: C5PC-15-WT

REV.A

Construction

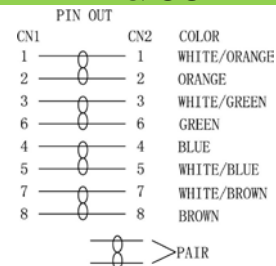


CAT5e Cross section



PIN & OUT

568B



Construction

UTP CAT.5e

Center Conductor:	24AWG stranded bare copper
Construction	7×32AWG
Dia.(in/mm)	0.024/0.60
Insulate	HDPE
Nom. Thickness(in/mm)	0.006/0.17
Insulation Dia.(in/mm)	0.038/0.98
Color Cord	Pair 1: Blue-White/Blue Pair 2: Orange-White/Orange Pair 3: Green-White/Green Pair 4: Brown-White/Brown
Pairs	4
Cabling	4Pairs with skeleton
Jacket	PVC
Nom. Thickness(in/mm)	0.024/0.60
Min. Thickness(in/mm)	0.019/0.48
Cable Dia.(in/mm)	0.209/5.30
Color	Black & Blue & Green & Gray Red & White & Yellow & Orange & Ivory
Printing:	STRUCTURED CABLE PRODUCTS CAT.5E PATCH CABLE UTP 4PR 24AWG TYPE CM (UL) C(UL) EXXXXXX

CONNECTER

Connector	RJ45(8P8C) MALE CAT5e
Insulation	Clear Polyester, UL94V-2
Contacts	Brass, Gold Plated 3u

CAT6 PATCH CABLE

Molded material	PVC
Pin&Out	EIA/TIA 568B (view the Pin&Out)
Length	view packing data
Packing	1pcs/bag view packing data

Performance

Electrical Characteristics:[@68°F.(20°C.)]

Cat.5e CHANNEL TEST (MHz/dB/dB/dB)

Freq.	NEXT	ATTN	RL	Freq.	NEXT	ATTN	RL
1	60	3	17	20	42	10.2	17
4	53.6	4.5	17	25	40.4	11.4	16
8	48.6	6.3	17	31.3	38.7	12.9	15.1
10	47	7.1	17	62.5	33.6	18.6	12.1
16	43.6	9.1	17	100	30.1	24	10
Conductor DCR (Ω/100m)							≤9.6
Unbalance of Pair DCR (%)							≤5
Dielectric strength between Pairs(kV/min)							≤1
Insulation resistance (MΩ·km)							≥5000
Capacitance (nF/100m)							≤5.6
Dielectric strength between Pairs(kV/min)							≤330
Characteristic impedance (Ω)							100±15
Short or Open of the loop							None

Mechanical Characteristics:

Operating Temperature Range(°C) -15~75

Packing data

Length (ft)	TOL. (in)	pcs/carton	G.W. (lbs/kgs)	Color
1	1.18	300	18.74/ 8.5	Black
3	1.18	200	23.15/ 10.5	Blue
5	1.97	150	23.15/ 10.5	Green
7	1.97	100	20.5/ 9.3	Gray
10	1.97	70	19.84/ 9	Red
15	1.97	60	23.59/ 10.7	White
25	1.97	50	31.31/ 14.2	Yellow
50	1.97	20	24.91/ 11.3	Orange
100	1.97	16	38.14/ 17.3	Ivory
(m)	(mm)	pcs/carton	(lbs/kgs)	
1	30	300	13.23/ 6	
2	30	90	13.23/ 6	
3	50	70	13.23/ 6	
5	50	40	17.64/ 8	
10	50	25	15.43/ 7	
25	50	12	19.84/ 9	

