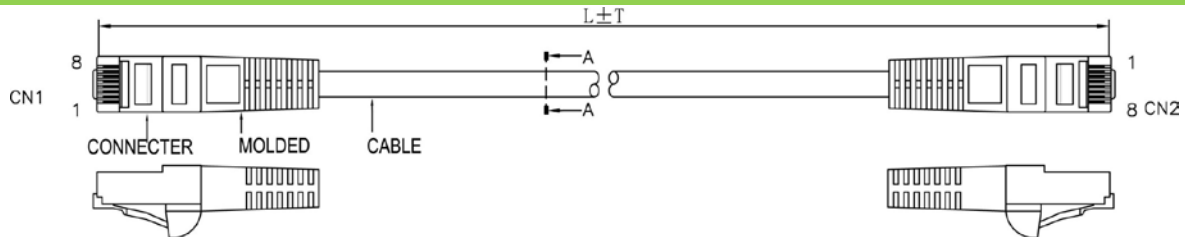


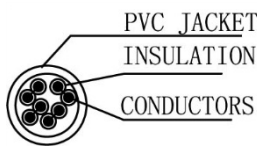
**SCP Part Number: C5PC-100-BK**

REV.A

**Construction**

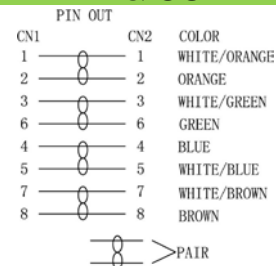


**CAT5e Cross section**



**PIN & OUT**

**568B**



**Construction**

**UTP CAT.5e**

|                          |  |
|--------------------------|--|
| <b>Center Conductor:</b> | <b>24AWG stranded bare copper</b>  |
| Construction             | 7×32AWG  |
| Dia.(in/mm)              | 0.024/0.60   |
| <b>Insulate</b>          | <b>HDPE</b>  |
| Nom. Thickness(in/mm)    | 0.006/0.17   |
| Insulation Dia.(in/mm)   | 0.038/0.98   |
| Color Cord               | Pair 1: Blue-White/Blue<br>Pair 2: Orange-White/Orange<br>Pair 3: Green-White/Green<br>Pair 4: Brown-White/Brown |
| Pairs                    | 4  |
| Cabling                  | 4Pairs with skeleton   |

|                       |  |
|-----------------------|--|
| <b>Jacket</b>         | <b>PVC</b>   |
| Nom. Thickness(in/mm) | 0.024/0.60   |
| Min. Thickness(in/mm) | 0.019/0.48   |
| Cable Dia.(in/mm)     | 0.209/5.30   |
| Color                 | Black & Blue & Green & Gray<br>Red & White & Yellow & Orange & Ivory |

**Printing:**  
STRUCTURED CABLE PRODUCTS CAT.5E PATCH CABLE  
UTP 4PR 24AWG TYPE CM (UL) C(UL) EXXXXXX

**CONNECTER**

|                  |                              |
|------------------|------------------------------|
| <b>Connector</b> | <b>RJ45(8P8C) MALE CAT5e</b> |
| Insulation       | Clear Polyester, UL94V-2     |
| Contacts         | Brass, Gold Plated 3u        |

**CAT6 PATCH CABLE**

|                 |                                 |
|-----------------|---------------------------------|
| Molded material | PVC                             |
| Pin&Out         | EIA/TIA 568B (view the Pin&Out) |
| Length          | view packing data               |

|                |                               |
|----------------|-------------------------------|
| <b>Packing</b> | 1pcs/bag<br>view packing data |
|----------------|-------------------------------|

**Performance**

**Electrical Characteristics:[@68°F.(20°C.)]**

|   |      |      |    |       |      |      |        |
|---|------|------|----|-------|------|------|--------|
| <b>Cat.5e CHANNEL TEST (MHz/dB/dB/dB)</b> |      |      |    |       |      |      |        |
| Freq.                                     | NEXT | ATTN | RL | Freq. | NEXT | ATTN | RL     |
| 1   | 60   | 3    | 17 | 20    | 42   | 10.2 | 17     |
| 4   | 53.6 | 4.5  | 17 | 25    | 40.4 | 11.4 | 16     |
| 8   | 48.6 | 6.3  | 17 | 31.3  | 38.7 | 12.9 | 15.1   |
| 10  | 47   | 7.1  | 17 | 62.5  | 33.6 | 18.6 | 12.1   |
| 16  | 43.6 | 9.1  | 17 | 100   | 30.1 | 24   | 10     |
| Conductor DCR (Ω/100m)                    |      |      |    |       |      |      | ≤9.6   |
| Unbalance of Pair DCR (%)                 |      |      |    |       |      |      | ≤5     |
| Dielectric strength between Pairs(kV/min) |      |      |    |       |      |      | ≤1     |
| Insulation resistance (MΩ·km)             |      |      |    |       |      |      | ≥5000  |
| Capacitance (nF/100m)                     |      |      |    |       |      |      | ≤5.6   |
| Dielectric strength between Pairs(kV/min) |      |      |    |       |      |      | ≤330   |
| Characteristic impedance (Ω)              |      |      |    |       |      |      | 100±15 |
| Short or Open of the loop                 |      |      |    |       |      |      | None   |

**Mechanical Characteristics:**

|                                 |        |
|---------------------------------|--------|
| Operating Temperature Range(°C) | -15~75 |
|---------------------------------|--------|

**Packing data**

| Length (ft) | TOL. (in) | pcs/carton | G.W. (lbs/kgs) | Color  |
|-------------|-----------|------------|----------------|--------|
| 1           | 1.18      | 300        | 18.74/ 8.5     | Black  |
| 3           | 1.18      | 200        | 23.15/ 10.5    | Blue   |
| 5           | 1.97      | 150        | 23.15/ 10.5    | Green  |
| 7           | 1.97      | 100        | 20.5/ 9.3      | Gray   |
| 10          | 1.97      | 70         | 19.84/ 9       | Red    |
| 15          | 1.97      | 60         | 23.59/ 10.7    | White  |
| 25          | 1.97      | 50         | 31.31/ 14.2    | Yellow |
| 50          | 1.97      | 20         | 24.91/ 11.3    | Orange |
| 100         | 1.97      | 16         | 38.14/ 17.3    | Ivory  |
| (m)         | (mm)      | pcs/carton | (lbs/kgs)      |        |
| 1           | 30        | 300        | 13.23/ 6       |        |
| 2           | 30        | 90         | 13.23/ 6       |        |
| 3           | 50        | 70         | 13.23/ 6       |        |
| 5           | 50        | 40         | 17.64/ 8       |        |
| 10          | 50        | 25         | 15.43/ 7       |        |
| 25          | 50        | 12         | 19.84/ 9       |        |

