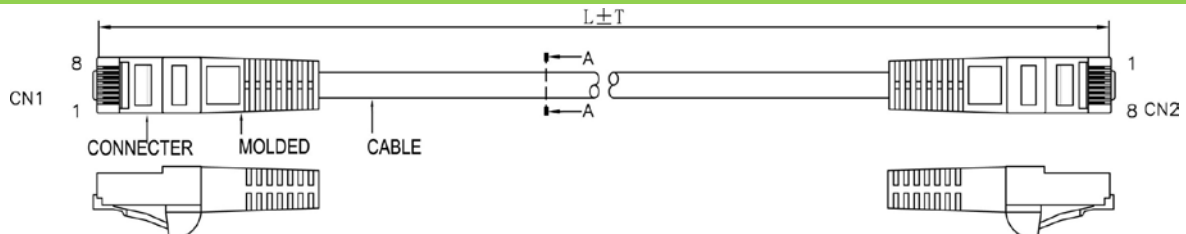


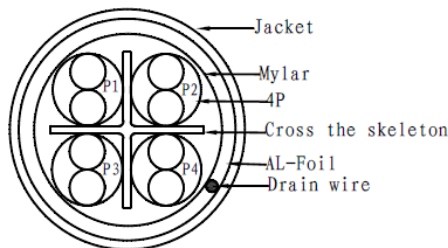
C6PCSH PATCH CABLE

1/16

Construction

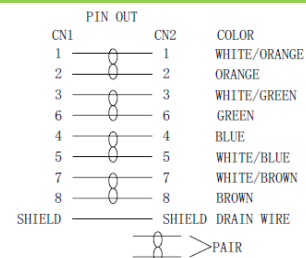


CAT6 Cross section



PIN & OUT

568B



Construction

F/UTP CAT.6

Center Conductor:	26AWG stranded bare copper
Construction	7×0.16mm
Dia.(in/mm)	0.019/0.48
Insulate	HDPE
Nom. Thickness(in/mm)	0.010/0.27
Insulation Dia.(mm)	0.034/0.86
Color Cord	Pair 1: Blue-White/Blue Pair 2: Orange-White/Orange Pair 3: Green-White/Green Pair 4: Brown-White/Brown
Pairs	4
Filler	PE Skeleton
Cabling	4Pairs with skeleton
Mylar	PET
Drain Wire	7/0.16mm Tinned Copper Wire
Shielding	Aluminum foil
Jacket	PVC
Nom. Thickness(in/mm)	0.024/0.60
Min. Thickness(in/mm)	0.019/0.48
Cable Dia.(in/mm)	0.248/6.30
Color	Black

Printing:
STRUCTURED CABLE PRODUCTS CAT6 PATCH CABLE
F/UTP 4PR 26AWG ANSI/TIA-568-C.2

CONNECTER

Connector	RJ45(8P8C) MALE CAT6
Insulation	Clear Polyester, UL94V-2
Contacts	Brass, Gold Plated 3u

CAT6 F/UTP PATCH CABLE

Molded material	PVC
Pin&Out	EIA/TIA 568B (view the Pin&Out)
Length	view packing data
Packing	1pcs/bag
	view packing data

Performance

Electrical Characteristics:[@68°F.(20°C.)]

Cat.6 CHANNEL TEST (MHz/dB/dB)

Freq.	RL	NEXT	Freq.	RL	NEXT
1	19	65	31.25	16.5	48.4
4	19	63	62.5	14.5	43.4
8	19	58.2	100	12	39.9
10	19	56.6	125	11	38.3
16	19	53.2	200	9	34.8
20	17.5	51.6	250	8	33.1
25	17	50			

Conductor DCR (Ω/100m)	≤9.6
Unbalance of Pair DCR (%)	≤5
Dielectric strength between Pairs(kV/min)	≤1
Insulation resistance (MΩ·km)	≥5000
Capacitance (nF/100m)	≤5.6
Dielectric strength between Pairs(kV/min)	≤330
Characteristic impedance (Ω)	100±15
Short or Open of the loop	None

Mechanical Characteristics:

Operating Temperature Range(°C)	-15~75
---------------------------------	--------

Packing data

Length (m)	TOL. (mm)	pcs/carton	N.W. (lbs/kgs)	G.W. (lbs/kgs)
1	30	200	18.74/ 8.5	20.94/ 9.5
2	30	120	24.25/ 11	26.46/ 12
3	50	100	25.35/ 11.5	27.56/ 12.5
5	50	60	27.56/ 12.5	29.76/ 13.5