

# SPECIFICATION

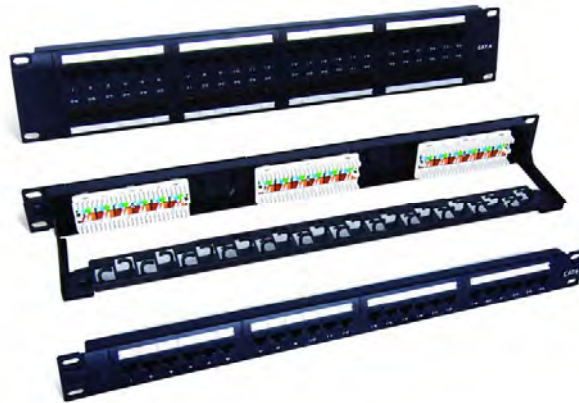
For

## UTP CAT6 550MHz PATCH PANEL, MODULAR TYPE

### I. SCP Part No. 324-6

Part #	Description
324-6	UTP 1U 24-port Krone/110 IDC
348-6	UTP 2U 48-port Krone/110 IDC
312-6	UTP 1U 12-port Krone/110 IDC, w/ plastic cable management

### II. Reference Photo:



### III. Standards complied

ANSI/TIA/EIA-568-B.2-1  
ISO/IEC 11801 2<sup>nd</sup> edition: 2002  
EN50173-1: 2002

### IV. Electrical Specification

1. Insulation Resistance:  $\geq 500 \text{ M}\Omega$
2. Dielectric Withstand Voltage: 500VAC
3. Contact Resistance  $\leq 35 \text{ m}\Omega$
4. Current Rating: 1.5A at 68°F

### V. Mechanical Specification

1. Plug insertion Life:  $\geq 750$  times plug in
2. Contact Force 99.2g (3.5oz) FCC Plug
3. Plug Retention Force: 30lb (133n/13.3Kg)
4. 110/Krone IDC Insertion Force: 4.5Kg minimum
5. 110/Krone IDC Retention Force: 0.5Kg minimum
6. Temperature Test: -40 to 150°F (-40 to 66°C)
7. RJ45 Contact: Phosphor Bronze with 50u" Gold plating over contact area

### VI. Packaging

1. Each in brown card board box
2. Instruction sheet included

1 of 1

[www.scp5e.com](http://www.scp5e.com)

[sales@scpcat5e.com](mailto:sales@scpcat5e.com)

Direct: 954-327-5770

Toll Free: 866-470-5742



**Structured Cable Products™**  
Quality Installations Deserve Quality Products