

SB800

120 Watt Six Drivers with Two Tweeter
Soundbar and 180 Watt 8" Wireless Woofer

Welcome to the Soundbar SB800 by Current Audio

The SB800 SoundBar describes the latest digital technology in amplified speaker sound bars with a powerful wireless amplified MegaBass subwoofer by Current Audio. The powerful subwoofer can be located anywhere in the room. This is the perfect Home Theater System with a wide sound stage. The system comes with a handheld remote to control power, switch inputs and adjust sound fields. The slim depth and sleek design blends with all flat LED/LCD TV models.

Features and Connections for SoundBar

Rear Panel SoundBar

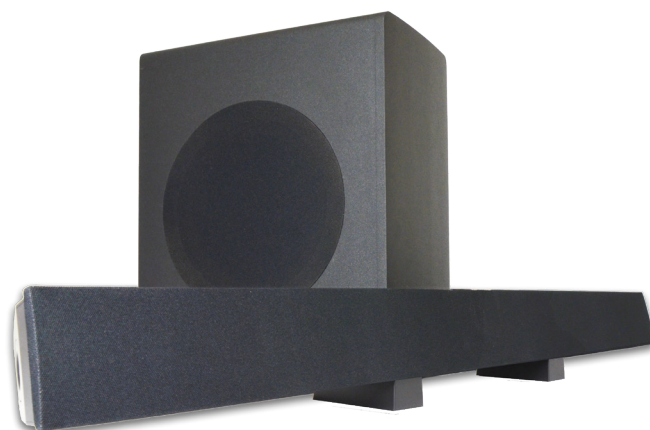
1. Power Switch-Rear panel switch to cut power for service or hook-up.
2. Input Power Jack-Connect the 12VDC power supply here.
3. Line Inputs-Three input methods are provided on the back panel. Digital Optical or standard analog RCA input from TV.
4. AUX IN-A standard 3.5mm audio jack for MP3, computers or mobile devices.

Front and Side Panel SoundBar

5. An enclosed accessory pack that includes brackets allowing the SoundBar to be table top or wall mounted.

Subwoofer

6. Input power Jack-Connect 110VAC 2 conductor power cord here.
7. Power Mode-Power ON or OFF
8. Match Button and Status LED-Used to sync the SoundBar with the MegaBass for control of the subwoofer.



SPECIFICATIONS

Soundbar Power	60 Watts RMS	120 Watts Peak
Subwoofer Power	80 Watts RMS	180 Watts Peak
Total Power	140 Watts RMS	300 Watts Peak
SPL	113.6dB	
Sound Mode	3 Enhanced DSP Surround Modes	
Speakers	8 Speakers. 6 2.5" Midrange Drivers and 2 1.25" Tweeters	
Subwoofer	2.4GHz 8" Long Throw Ported Woofer	
Bluetooth	Connectivity for iPhone, Android, MP3 and PC	
Audio Inputs	Digital Optical, Digital Coaxial RCA, 3.5mm	
Frequency Response	20 Hz to 20 kHz	
Soundbar Dimensions (weight)	39 3/4" (1010mm) x 3 1/2" (89mm) x 3 5/16" (84mm) 9lbs.	
Subwoofer Dimensions (weight)	17 1/8"(435mm) x 8 11/16"(221mm) x 14 1/4"(362mm) 21 lbs	



Part Number 93106

Manual URL www.currentaudio.com

